

Indian Wells  
(760) 568-2611

Irvine  
(949) 263-2600

Los Angeles  
(213) 617-8100

Manhattan Beach  
(310) 643-8448

Ontario  
(909) 989-8584



**BEST BEST & KRIEGER**  
ATTORNEYS AT LAW

18101 Von Karman Avenue, Suite 1000, Irvine, CA 92612  
Phone: (949) 263-2600 | Fax: (949) 260-0972 | www.bbklaw.com

Riverside  
(951) 686-1450

Sacramento  
(916) 325-4000

San Diego  
(619) 525-1300

Walnut Creek  
(925) 977-3300

Washington, DC  
(202) 785-0600

**Stephanie Smith**  
(949) 263-2612  
stephanie.smith@bbklaw.com

**Town of Windsor  
2021 Public Participation Re-Districting Kit**

**Contents**

1. This information and instruction page.
2. Listing of criteria for district development.
3. Summary of City demographics.
4. Map of Current City Council District Boundaries
5. Map with total population by population unit.
6. Map with population unit ID numbers.
7. Listing of demographic elements by population unit (to be used with item 6).
8. Two Blank Population Unit maps on which to mark and submit proposed district boundaries

**Instructions**

1. Use the maps with the total population counts printed on them to add the population in the population units to develop council districts that are equal in population. An ideal district population is 6,595 persons (the total population of the City – 26,378 – divided by the number of council districts (four). To be within the absolute maximum deviation of 5 percent of the ideal, with five districts each district must contain between 6,265 and 6,293 people.
2. You may use the maps with Population Unit ID numbers, and the accompanying demographic data to also create maps with equal populations that also consider racial or ethnic composition. Note that the demographic data may not add up precisely to total population because people may identify with one or more racial or ethnic group. When using the Population Unit ID map and the accompanying data sheet, balance your districts using the total population, not the voting age population.
3. Be careful not to split unnecessarily any obvious community of interest. Use your knowledge of the community to identify these areas.



**BEST BEST & KRIEGER**  
ATTORNEYS AT LAW

4. If you would like, please feel free to share your ideas and goals regarding redistricting. What do you want your Council districts to look like, and represent, for the Town of Windsor. In other words, are there particular neighborhoods, or communities of interest you would like to see together in one Council district.
5. Try to follow the census blocks as outlined on the maps. However, if you would like to create districts that involve crossing or splitting those lines, feel free to do so. While not all splits may be permissible, our analysts will do their best to match up the smaller census blocks (not shown on the maps) to the desired district boundaries you have submitted.
6. **Paper submission:** Transfer your final map lines to a citywide map of population units using a thick black marking pen. You may color your maps if you would like. Submit your map to City Hall or directly to the City's consultant, Best Best & Krieger, by mail (18101 Von Karman, Suite 1000, Irvine, CA 92612).
7. **Electronic submission:** Scan and email the map containing your district assignments or a picture of your hand-drawn map to [Stephanie.Smith@bbklaw.com](mailto:Stephanie.Smith@bbklaw.com). Again, your maps may be submitted in color.
8. If you have any questions, please contact Stephanie Smith at BB&K at (949) 263-2612.
9. Additionally redistricting information may be found on the Town's redistricting webpage, found at <https://www.townofwindsor.com/1300/2022-Redistricting>

**Redistricting Criteria**

1. Each Council District shall contain a nearly equal population as required by law; and
2. Council District borders shall be drawn in a manner that complies with the Federal Voting Rights Act and avoids racial gerrymandering; and
3. Council Districts shall consist of contiguous territory in as compact form as possible; and
4. Council Districts shall respect communities of interest as much as possible; and
5. Council District borders shall follow visible natural and man-made geographical and topographical features as much as possible.

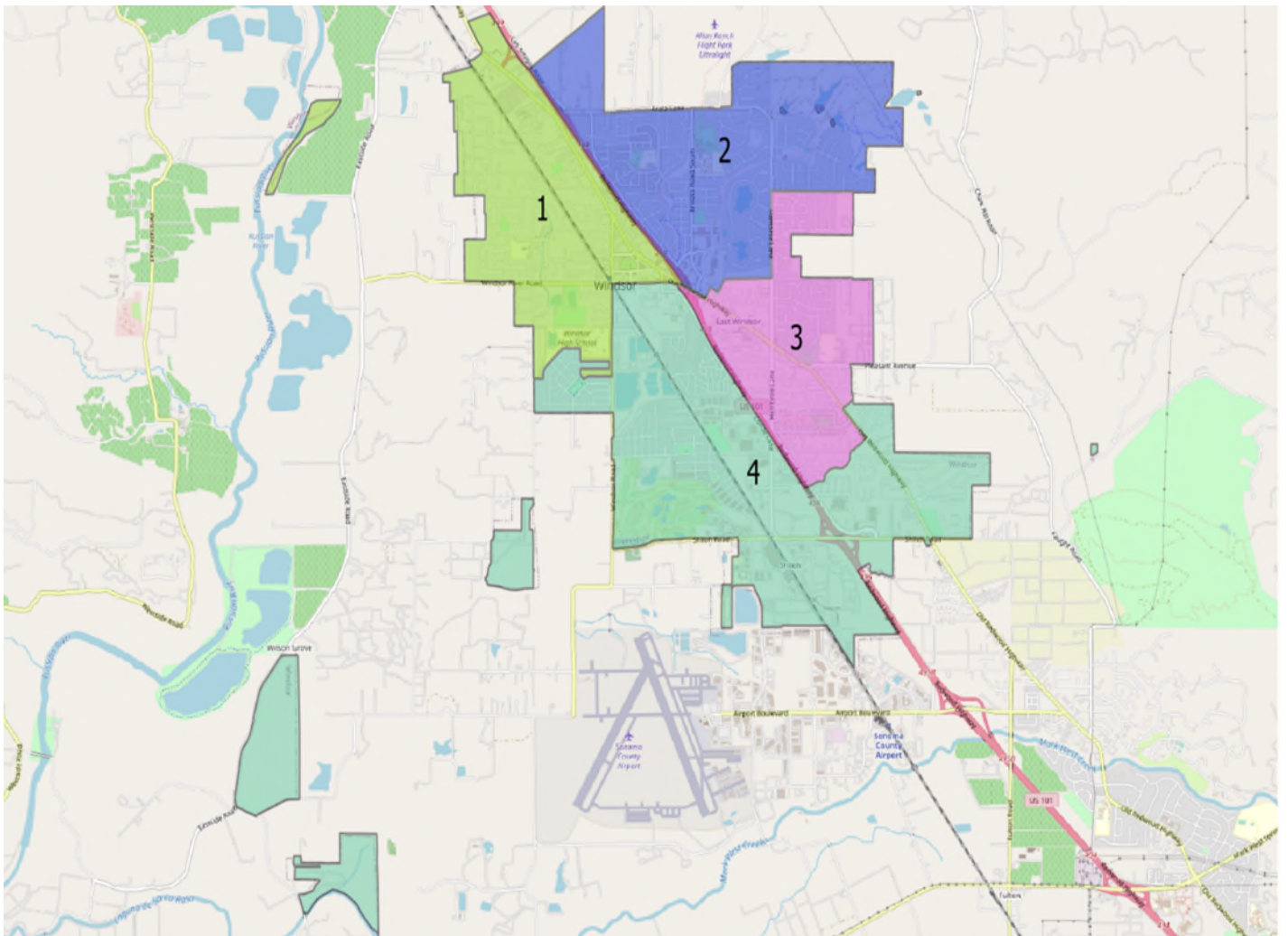


**BEST BEST & KRIEGER**  
ATTORNEYS AT LAW

Summary Demographic Profile

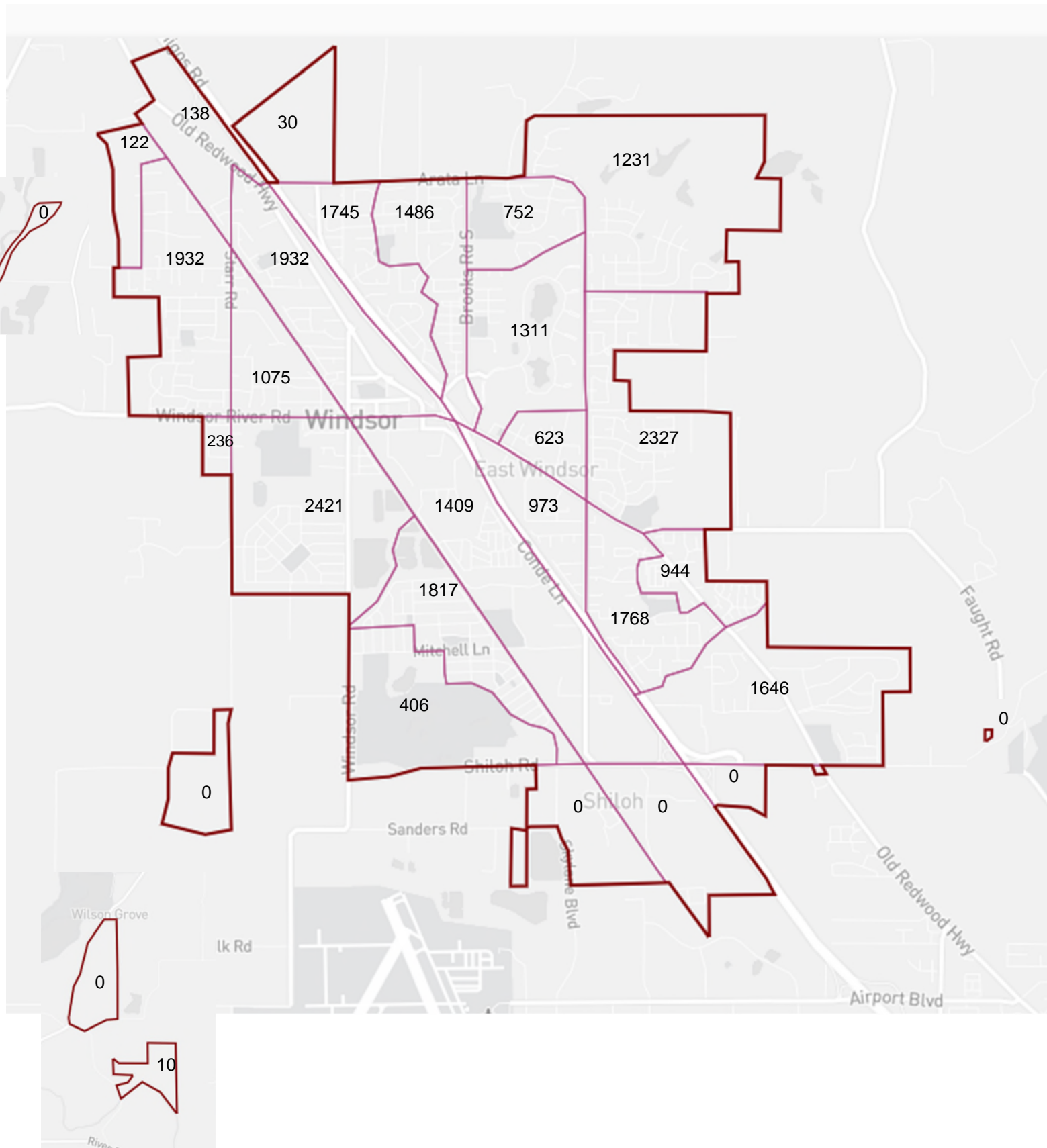
Town of Windsor		
Race/Ethnic Profile	Count	Percent
Latino	8908	0.338
NL (Non-Latino) White Alone	14896	0.565
NL Black Alone	220	0.008
NL AIAN Alone	187	0.007
NL ASIAN Alone	744	0.028
NL Hawaiian Alone	53	0.002
NL Other Alone	93	0.004
NL 2+ Races	1277	0.048
Total Voting Age Pop (VAP)	20507	0.777
Latino VAP	6253	0.237
NL White Alone VAP	12338	0.468
NL Black Alone VAP	178	0.007
NL AIAN Alone VAP	159	0.006
NL ASIAN Alone VAP	638	0.024
NL Hawaiian Alone VAP	45	0.002
NL Other Alone VAP	61	0.002
NL 2+ Races VAP	835	0.032
Citizen Voting Age (CVAP) Pop	19128	0.725
CVAP NL White	12688	0.481
CVAP NL Black	172	0.007
CVAP Hispanic	4800	0.182
CVAP Non-Hispanic	14312	0.543
CVAP AIAN	241	0.009
CVAP ASIAN	609	0.023
CVAP Hawaiian	56	0.002
CVAP Other	96	0.004

Current Council District Boundaries



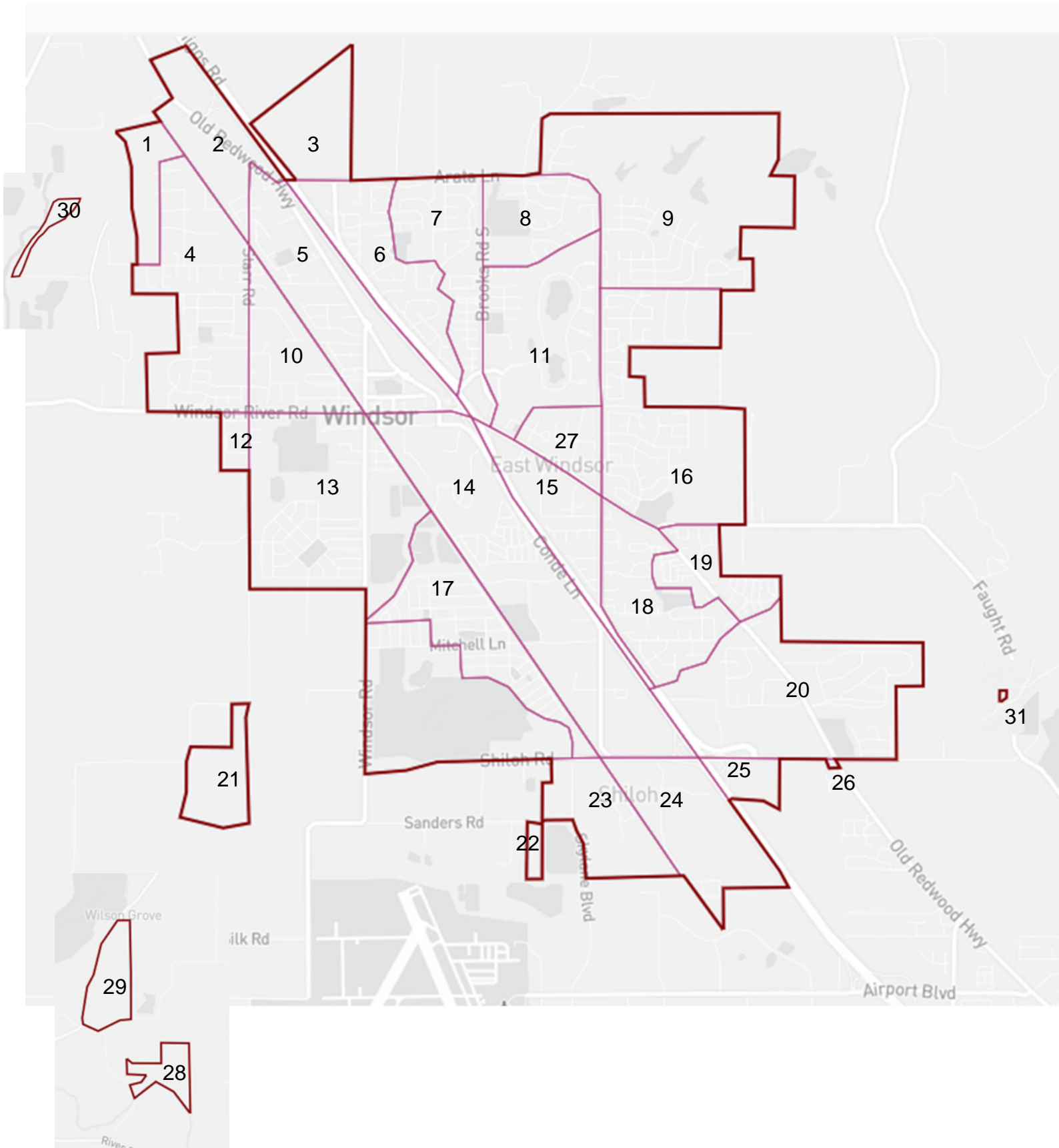
# Town of Windsor Redistricting 2021

## Population by Population Unit



# Town of Windsor Redistricting 2021

## Population Unit ID Numbers





# Town of Windsor Redistricting 2021

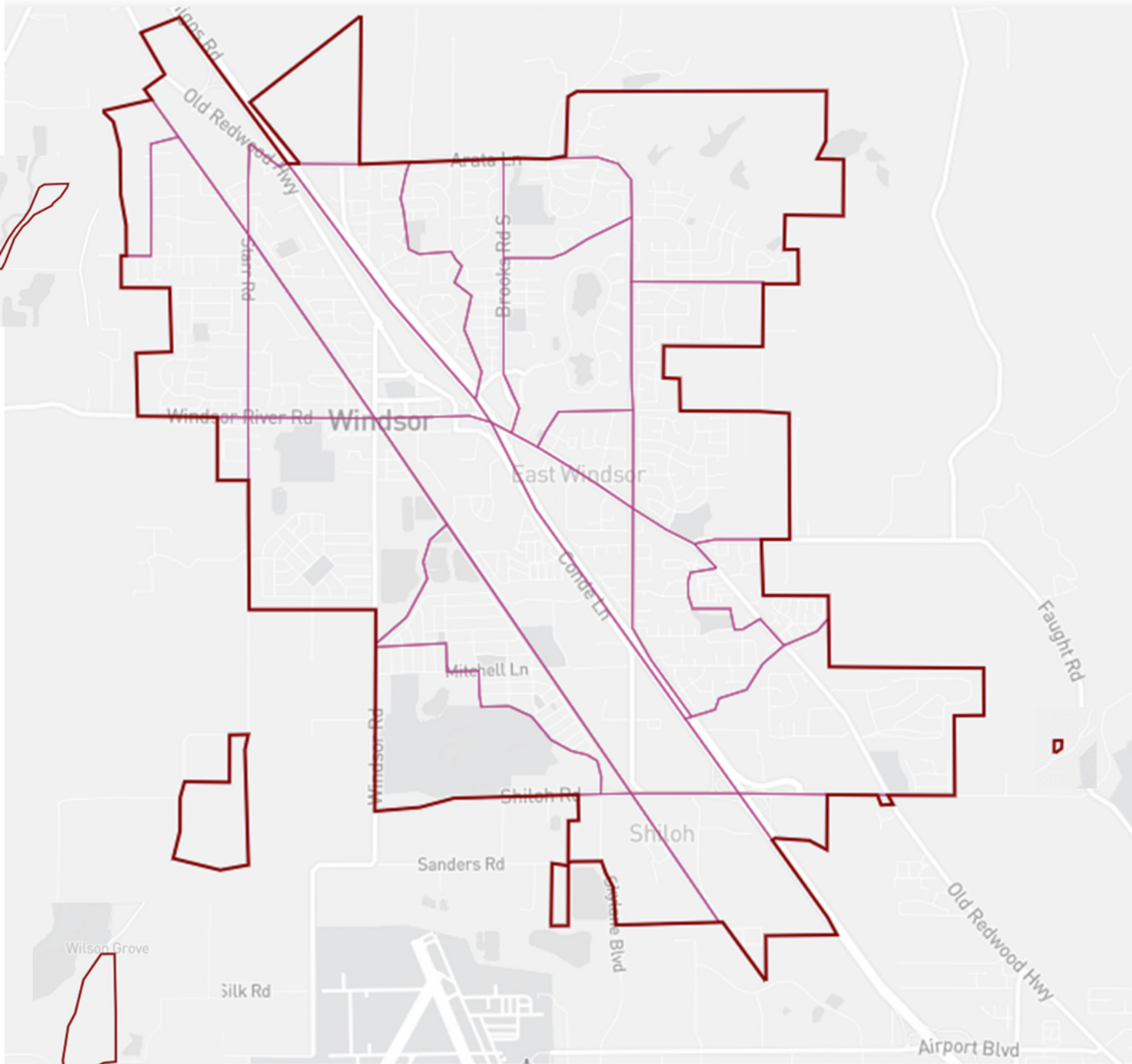
## Blank Map for Submission

Your Contact Information:

Name: \_\_\_\_\_

Email: \_\_\_\_\_

Phone #: \_\_\_\_\_



Please use a thick, dark, pen to draw lines around your proposed districts. You may color inside the lines. You may submit your proposed map directly to City Hall, or email it to the City's redistricting consultant directly: [Stephanie.Smith@bbklaw.com](mailto:Stephanie.Smith@bbklaw.com).



# Town of Windsor Redistricting 2021

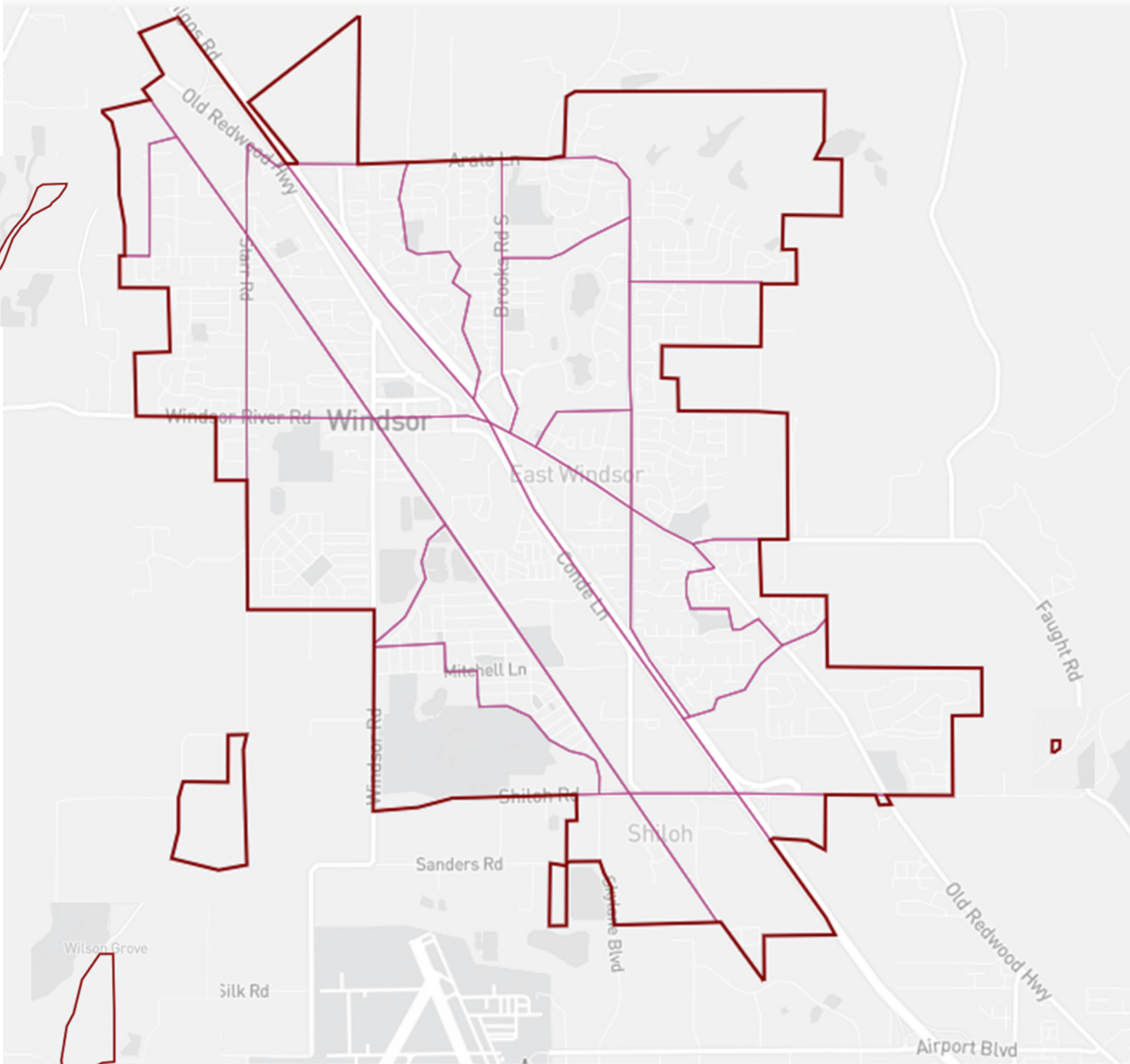
## Blank Map for Submission

Your Contact Information:

Name: \_\_\_\_\_

Email: \_\_\_\_\_

Phone #: \_\_\_\_\_



Please use a thick, dark, pen to draw lines around your proposed districts. You may color inside the lines. You may submit your proposed map directly to City Hall, or email it to the City's redistricting consultant directly: [Stephanie.Smith@bbklaw.com](mailto:Stephanie.Smith@bbklaw.com).

# Town of Windsor Redistricting 2021

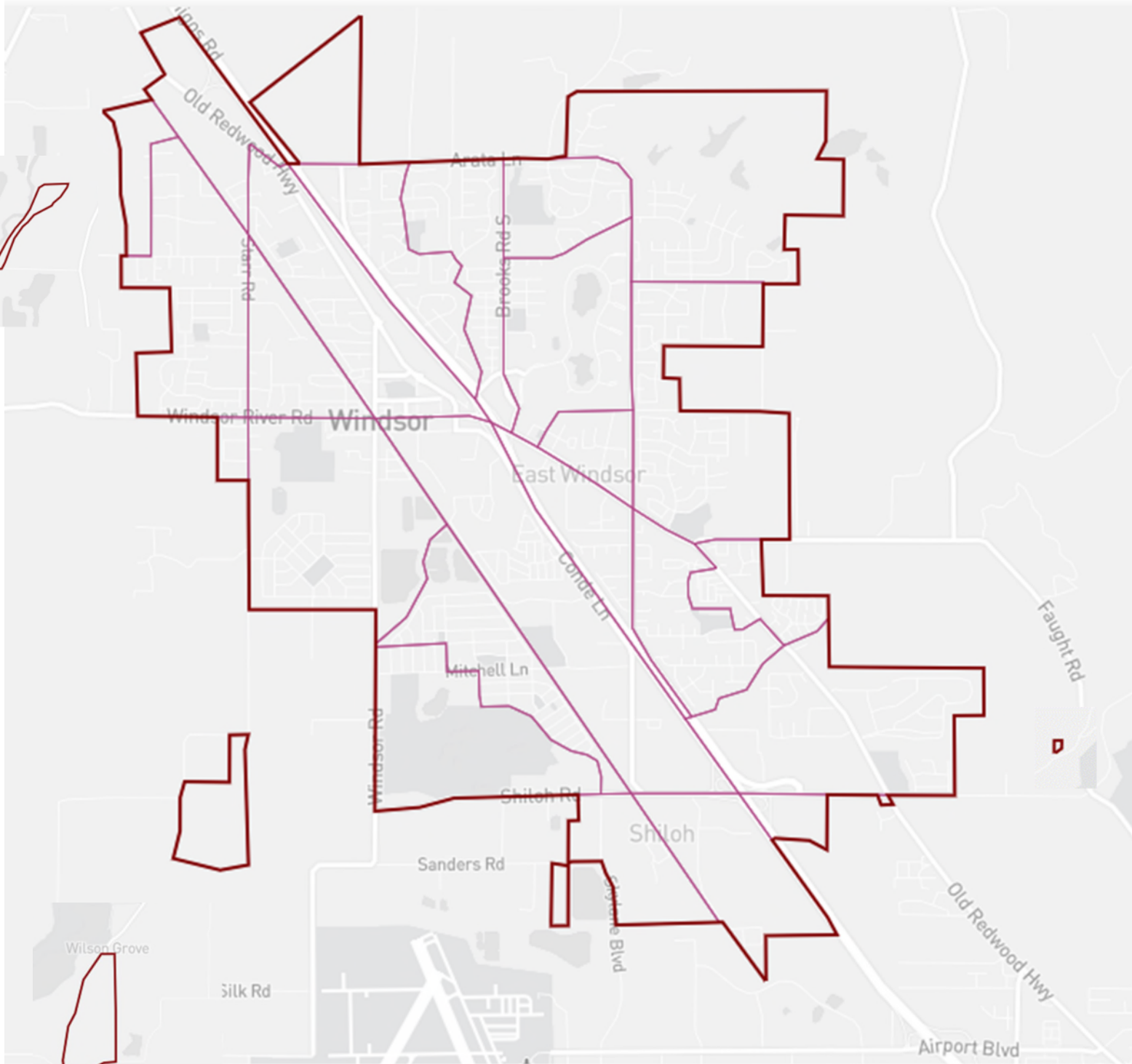
## Blank Map for Submission

Your Contact Information:

Name: \_\_\_\_\_

Email: \_\_\_\_\_

Phone #: \_\_\_\_\_



Please use a thick, dark, pen to draw lines around your proposed districts. You may color inside the lines. You may submit your proposed map directly to City Hall, or email it to the City's redistricting consultant directly: [Stephanie.Smith@bbklaw.com](mailto:Stephanie.Smith@bbklaw.com).