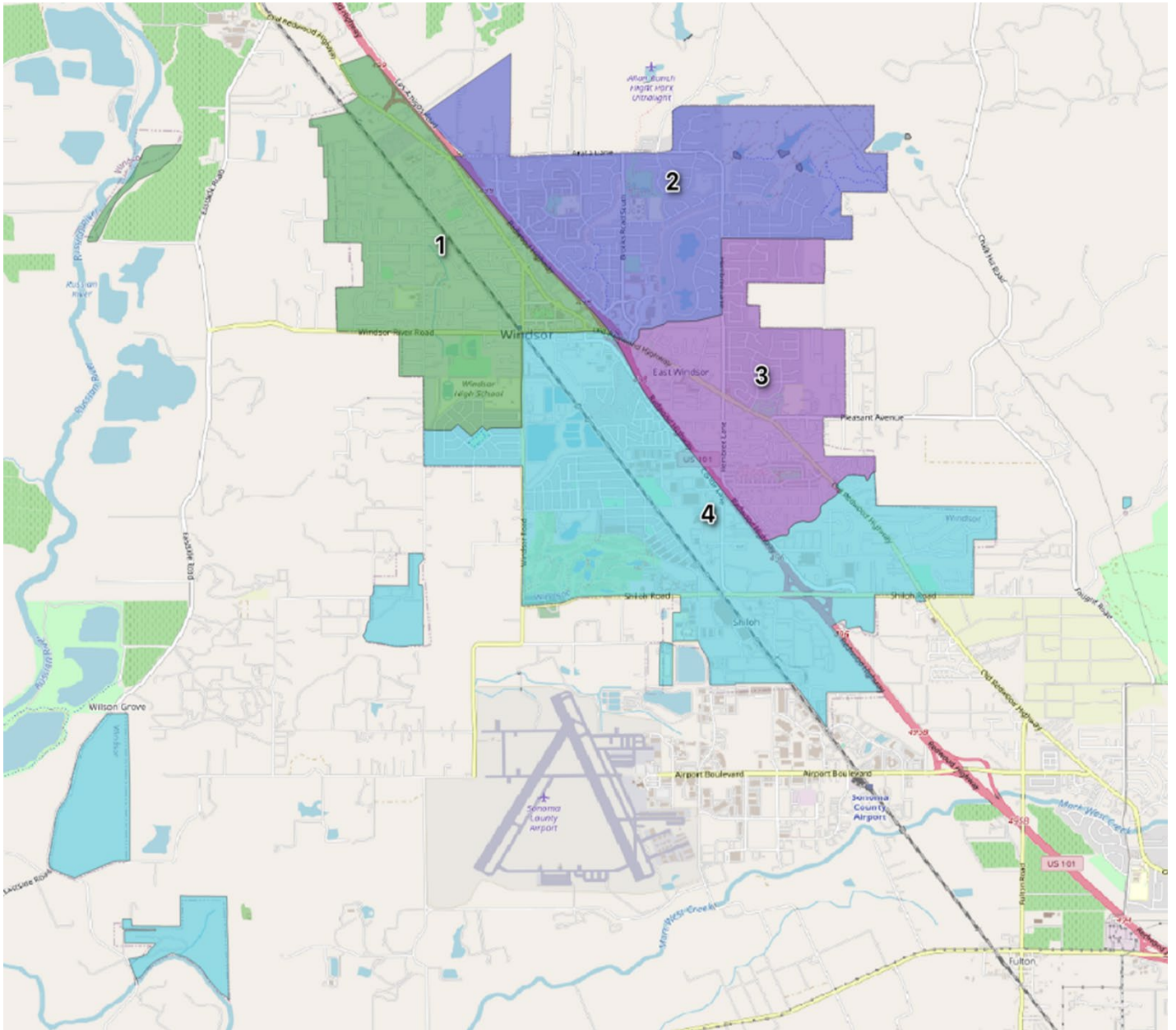


Map Option 1



Map Option 1

Demographic Analysis

District	Total Population	Raw Deviation	% Deviation	Latino	CVAP*19 Total	CVAP19 NL** White	CVAP19 NL Black	CVAP Hispanic	CVAP19 Not Hispanic	CVAP19 NL AIAN***	CVAP19 NL ASIAN	CVAP19 NL Hawaiian	CVAP19 NL Other
1	6,590	-5	-0.07%	3,022	4,980	2,779	49	1,790	3,175	59	184	-	2
2	6,421	-174	-2.63%	1,590	4,605	3,450	62	829	3,788	48	79	-	78
3	6,739	145	2.19%	2,453	5,392	3,440	5	1,480	3,882	78	141	-	3
4	6,628	34	0.51%	1,843	4,151	3,019	56	701	3,467	56	205	56	13
Tot Pop	26,378			8,908	19,128	12,688	172	4,800	14,312	241	609	56	96
Ideal	6,595	Deviation	4.82%										
*CVAP =	Citizen Voting Age Population												
**NL =	Non-Latino												
***AIAN=	American Indian Alaskan Native												