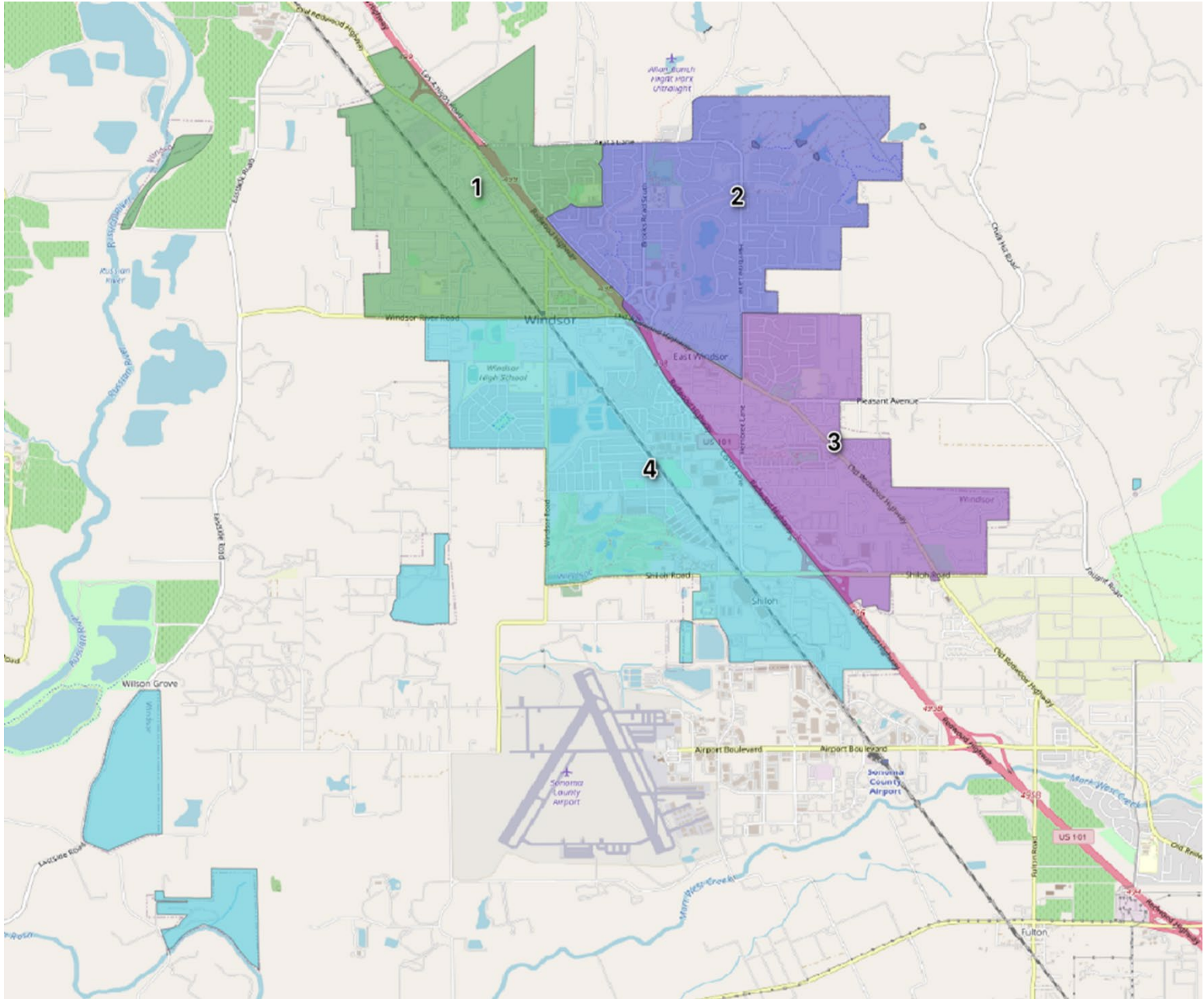


# Map Option 2



# Map Option 2

## Demographic Analysis

District	nTotal Populatio	Raw Deviation	% Deviation	Latino	CVAP*19 Total	CVAP19 NL** White	CVAP19 NL Black	CVAP Hispanic	CVAP19 Not Hispanic	CVAP19 NL AIAN***	CVAP19 NL ASIAN	CVAP19 NL Hawaiian	CVAP19 NL Other
1	6,511	-84	-1.27%	3,008	4,962	2,768	37	1,825	3,135	57	155	-	22
2	6,835	241	3.65%	1,664	5,082	3,755	62	869	4,194	83	107	-	57
3	6,716	122	1.84%	2,372	4,983	3,351	5	1,250	3,731	27	99	56	2
4	6,316	-279	-4.22%	1,864	4,101	2,814	68	856	3,252	74	248	-	15
Tot Pop	26,378												
Ideal	6,595	<b>Deviation</b>	<b>7.87%</b>										
*CVAP =	Citizen Voting Age Population												
** NL =	Non-Latino												
***AIAN =	American Indian Alaskan Native												