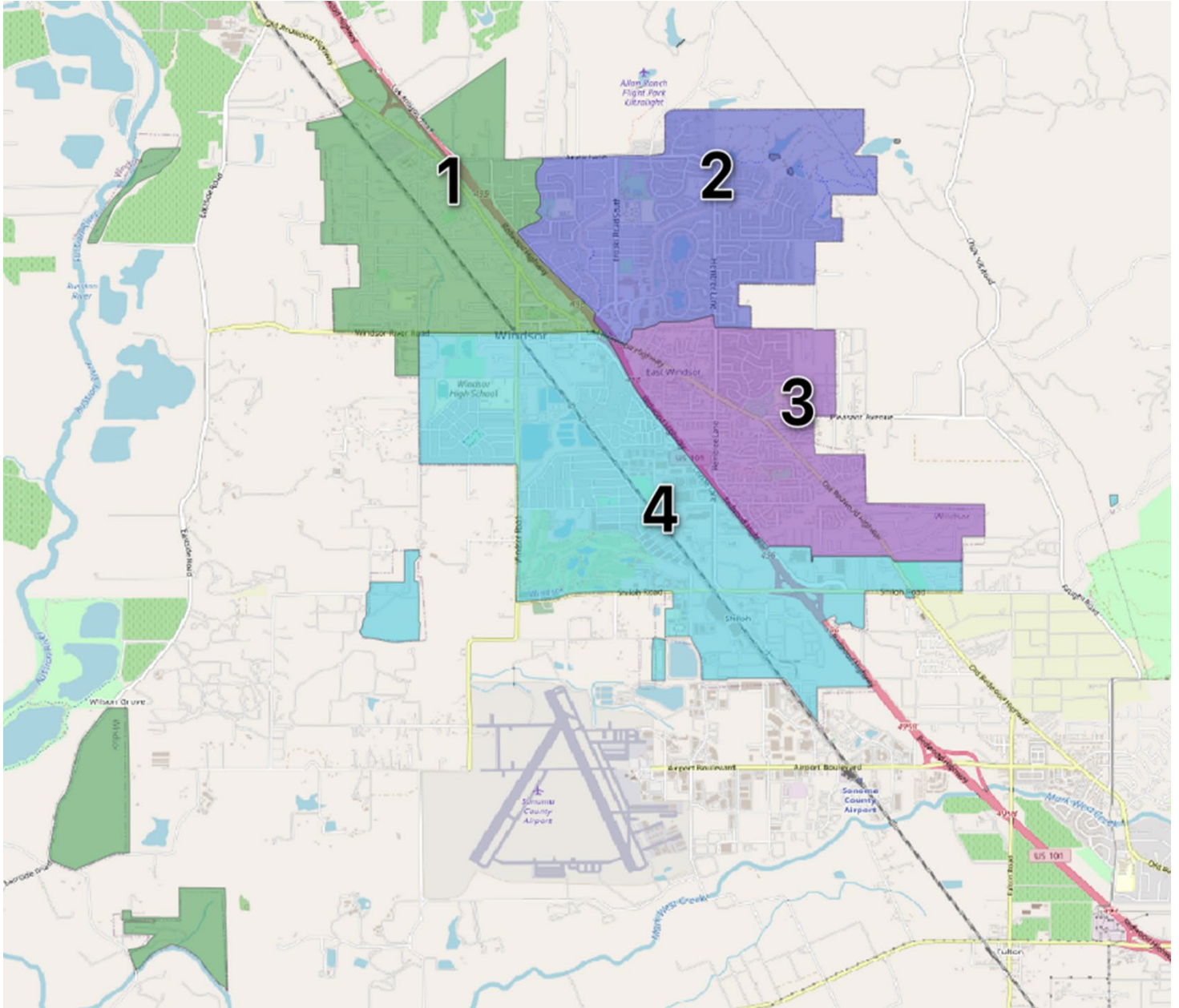


# Map Option 3



# Map Option 3

## Demographic Analysis

District	Total Population	Raw Deviation	% Deviation	Latino	CVAP*19 Total	CVAP19 NL** White	CVAP19 NL Black	CVAP Hispanic	CVAP19 Not Hispanic	CVAP19 NL AIAN***	CVAP19 NL ASIAN	CVAP19 NL Hawaiian	CVAP19 NL Other
1	6,368	-227	-3.43%	3,003	4,840	2,604	37	1,849	2,993	76	154	-	17
2	6,466	-129	-1.95%	1,380	4,760	3,705	62	682	4,082	47	103	-	61
3	6,980	386	5.85%	2,547	5,370	3,500	5	1,438	3,923	63	104	56	3
4	6,564	-31	-0.46%	1,978	4,158	2,879	68	831	3,314	55	248	-	15
Tot Pop	26,378												
Ideal	6,595	<b>Deviation</b>	<b>9.28%</b>										
*CVAP =	Citizen Voting Age Population												
**NL =	Non-Latino												
***AIAN =	American Indian Alaskan Native												