

A

RESOLUTION NO. 2863-11

**A RESOLUTION OF THE TOWN COUNCIL
OF THE TOWN OF WINDSOR
APPROVING THE LOT LINE ADJUSTMENT
REQUESTED BY OSL MANAGEMENT LLC
FOR THE BELL VILLAGE PROJECT
(FILE NO. LLA 09-57)**

WHEREAS, the Town of Windsor Town Council considered the request from Jeff Civian / OSL Management LLC for a lot line adjustment of 6,681 square feet. Parcel A (APN 161-070-036, 9290 Old Redwood Highway) will be reduced in area from 24.51+/- acres to 24.36 +/-acres, Parcel B (APN 161-060-040, 9660 Old Redwood Highway) will be increased in area from 0.59 acres to 0.74 acres; and

WHEREAS, the proposed lot line adjustment is directly related to the Bell Village Project, concurrently processed as File No. GPA/ZC/UP/MJS 97-19. The proposed lot line adjustment has been included in the analysis of the Bell Village Project, including environmental review; and

WHEREAS, by Resolution No. 2862-11, the Town Council has adopted a Mitigated Negative Declaration associated with the Bell Village Project, and including the proposed lot line adjustment; and

WHEREAS, the proposed lot line adjustment has been processed in accordance with the provisions of the Town of Windsor Subdivision Ordinance; and

WHEREAS, Resolution 2864-11 and Ordinance 2012-273 associated with the Bell Village Project include adjustment to General Plan and Zoning Map boundaries to correspond with this lot line adjustment.

NOW, THEREFORE, BE IT RESOLVED that the Town Council hereby approves the requested Lot Line Adjustment as described in Exhibit "A" and subject to the following conditions:

TOWN ENGINEER (Unless otherwise stated, conditions in this section shall be to the satisfaction of the Town Engineer):

1. All requirements of Section 16-8-330 (b)(4) shall be satisfied prior to approval of grant deeds for recordation.


PASSED, APPROVED AND ADOPTED this 7th day of December 2011, by the following vote:

**AYES: COUNCILMEMBERS ALLEN, GOBLE, SALMON, SCHOLAR AND
MAYOR FUDGE**

NOES: NONE

ABSTAIN: NONE

ABSENT: NONE



DEBORA FUDGE, MAYOR

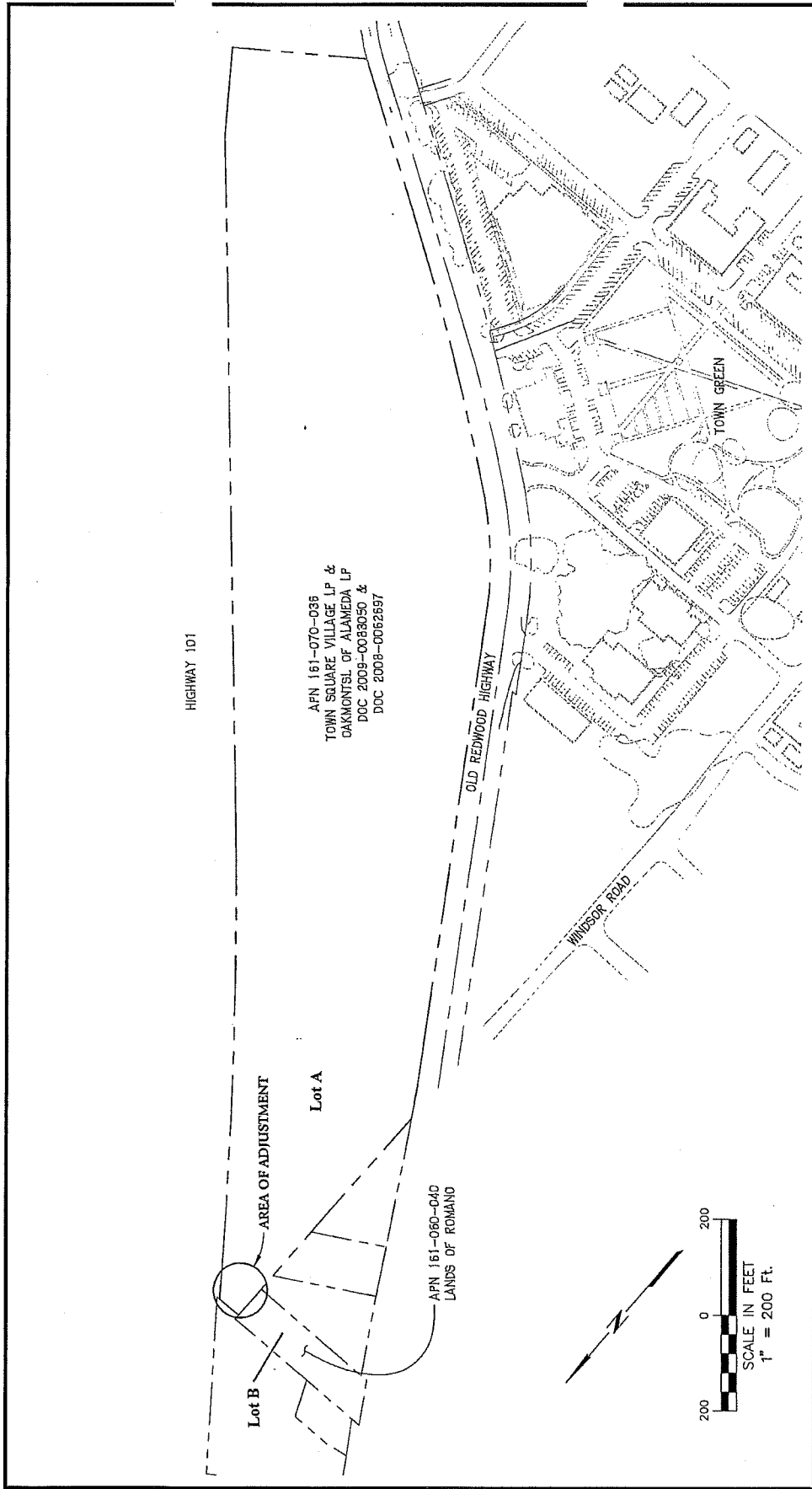
ATTEST:



MARIA DE LA C, TOWN CLERK

Attachments:

Exhibit "A": Lot Line Adjustment Diagram



BELL VILLAGE
LOT LINE ADJUSTMENT - LOCATION MAP
 SEPTEMBER 2009

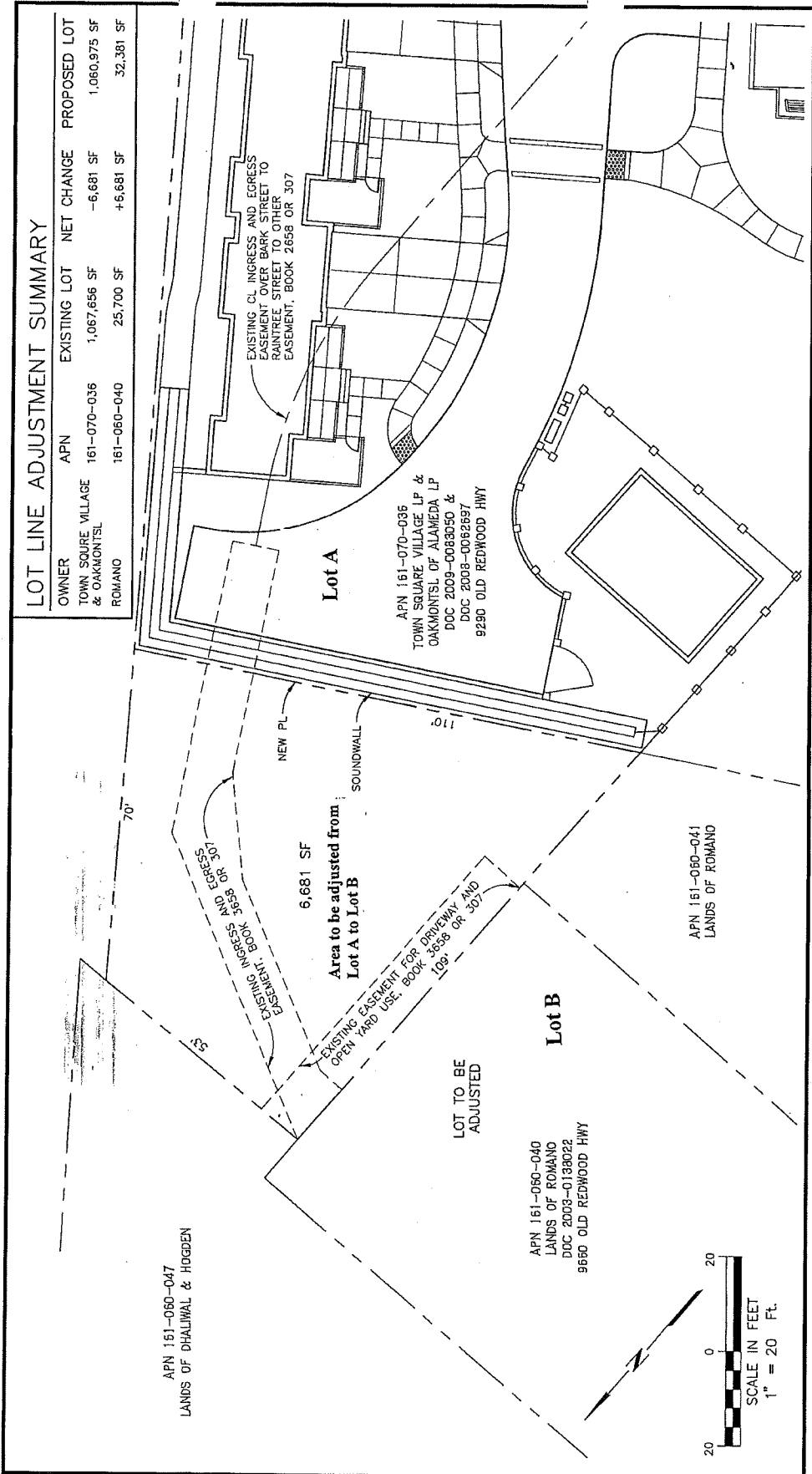
Brelje & Race
 CONSULTING CIVIL ENGINEERS
 5755 PLYMOUTH BLVD., SUITE 100, SAN JOSE, CA 95128

Exhibit A

1/2

LOT LINE ADJUSTMENT SUMMARY

OWNER	APN	EXISTING LOT	NET CHANGE	PROPOSED LOT
TOWN SQUARE VILLAGE & OAKMONTSL	161-070-036	1,067,656 SF	-6,681 SF	1,060,975 SF
ROMANO	161-060-040	25,700 SF	+6,681 SF	32,381 SF



BELL VILLAGE
 LOT LINE ADJUSTMENT EXHIBIT
 SEPTEMBER 2009

Brelje & Race
 ENGINEERS
 10700 Old Redwood Hwy, Suite 200, Redwood City, CA 94061
 Tel: 650.961.1111 Fax: 650.961.1112